

TECHNICAL DATA SHEET

ND Solar Mounting System for Green Roofs



ND Solar Mounting System for Green Roofs

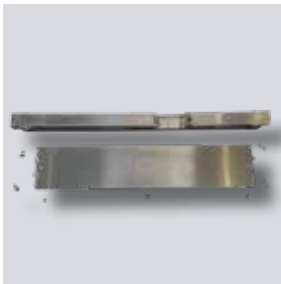
Modular, ballasted mounting system for placing individual solar panels / rows of solar panels on a green roof. With this system, sufficient distance is maintained between the vegetation and the solar panels to ensure optimal performance of both. The ND Solar Mounting System for Green Roofs consists of a base plate, adjustable riser (with profile holder), including bolts and nuts. The adjustable riser and profile holder are pre-assembled to facilitate quick installation.

The ND Solar Mounting System for Green Roofs is ballasted on the drainage system using the ND Solar Ballast Support, eliminating the need to place it on the waterproofing membrane. Additionally, the adjustable riser does not need to pierce the drainage system. Therefore, the mounting system can be easily positioned and adjusted to the desired panel orientation. This supports a highly flexible approach to install the solar panels. This type of installation also helps prevent hydrostatic pressure on the waterproofing membrane. The adjustable riser allows for compensation of slope and unevenness. The riser can be adjusted in increments of 2 cm at 4 levels.

Application

The ND Solar Mounting System for Green Roofs is a component of the Nophadrain Bio-Solar System. The mounting system can only be used in combination with the ND SolarDrain Drainage System, the ND Solar Ballast Support, and the other system components of the Nophadrain Bio-Solar Roof System (ND Solar Panel Mounting Profiles, ND Solar Coupling Plates, ND Solar Module Centre Clamps, ND Solar Module End Clamps, and the ND Solar Wind Bracing).

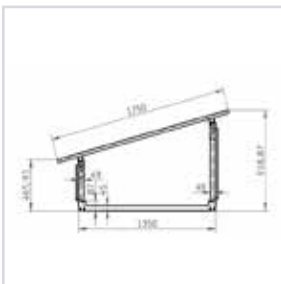
The ND Solar Mounting System for Green Roofs is also suitable for inverted roofs, as well as water retention roofs in combination with the ND WSE-100lte Water Retention Element (instead of ND SolarDrain Drainage System).



Base plate, adjustable riser (with profile holder), including bolts and nuts

Properties

- Material: aluminium
- Orientation: south or east-west
- Panel orientation: portrait
- Module slope: 15° (Other module tilt angles depending on the object)
- Stability: proven in accordance with applicable regulations
- Weight: 4.5 kg per set
- Method of installing: without roof penetration
- Packaging: per piece/set: base plate, adjustable riser (with profile holder), including bolts and nuts
- Slope: suitable for roof surfaces with a slope pitch of 0° - 5°



Technical Detail ND Solar Mounting System for Green Roofs

| Product | Dimensions (L x W) | Packaging |
|--|--------------------|-----------|
| ND Solar Mounting System for Green Roofs | Technical detail | per set |