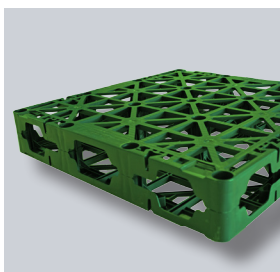


## TECHNICAL DATA SHEET

### ND WSE-100lte Water Retention Element



ND WSE-100lte  
Water Retention Element

Water storage and retention element made of polypropylene for surface drainage and water buffering used in the Nophadrain Systems for extensive green roofs. Due to the special design, the water retention elements can also be used on inverted roofs. The elements can be combined with flow restrictors for the suitable regulation of drainage [e.g. ND AFC-200 Adjustable Flow Control].

#### Applications

The ND WSE-100lte Water Retention Elements are designed for roofs without fall and are therefore suitable for temporary storage or water buffering of excess water caused by possible discharge restrictions into the sewerage system due to e.g. heavy rain.

To establish targeted definitions of the discharge volume the appropriate throttle system can be combined with an adjustable flow control system [e.g. ND AFC-200] can be combined with a water retention build-up.

The ND WSE-100lte Water Retention Elements are suitable for the use in extensive green roofs. For protection of the waterproofing membrane or the thermal insulation, ND SV 300 Protective Geotextile has to be placed underneath the ND WSE-100lte. As filter layer, the ND FV-300 Filter Geotextile has to be used.

#### Accessories

The ND WSE-100lte Water Retention Systems need to be interlocked with special connectors (type Large) in order to assure best force transmission. Recommended quantity: 6 connectors per m<sup>2</sup> (available per bag (50 pieces)).

#### Properties

- Material: 100% recycled PP regenerate (polypropylene)
- Colour: green (can vary because of recycled material)
- Cavity volume: approx. 95%
- Open surface: > 63%
- Durability: 50 years

Product	Dimensions (L x W X H)	Compressive strength*	Weight
ND WSE-100lte	approx 0.6 m x 0.6 m x 100 mm	> 240 kN/m <sup>2</sup>	>1.8 [kg/piece]

\*Values were determined on a full-contact (top/bottom) press. Test speed is 10 mm/min by a temperature of 23+ / -2 ° C.

**nophadrain**<sup>®</sup>  
SMART GREEN ROOF SYSTEMS

#### Nophadrain BV

Mercuriusstraat 10  
6468 ER Kerkrade  
The Netherlands

+31 (0)45 535 50 30  
info@nophadrain.com

[www.nophadrain.com](http://www.nophadrain.com)